

Feature Checklist

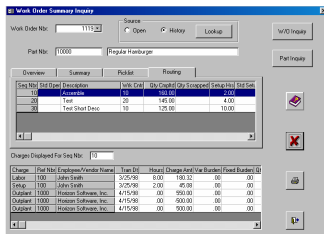
Financial Analysis

Covering Costing, Accounts Payable, Accounts Receivable, General Ledger and Financial Reporting this module is the measuring stick of the MRP Plus system.



Costing

- Supports 3 costing methods- standard, average and last.
- Support for 6 cost components- Material, Labor, Outplant, Fixed Burden, Variable Burden, Material Burden.
- Details cost by work order including material, labor, burden and outplant.
- Calculates and posts variances for material, labor, burden and outplant.
- Rolls up labor, burden and outplant costs from routings for calculation of part costing.
- Calculates material costs using bill of material.
- Work Order Summary report details both summary and detailed costing information showing variances to standards.

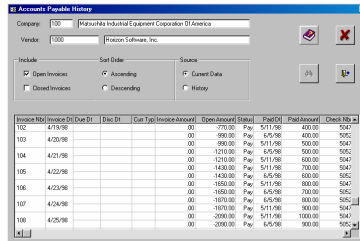


- Tracks Work In Process value.



Accounts Payable

- Reconciles invoices with purchase orders.
- Posts variances between purchase orders and invoices.
- Supports partial payments.
- Pay multiple invoices with one check.
- Calculates discounts allowed.
- Has special payments codes for holds and priority payments.
- Payment Inquiry for unpaid and paid invoices.

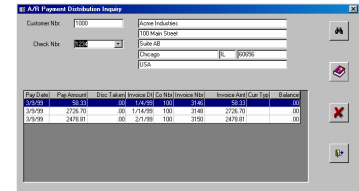


- Payment History kept (length determined by user).

Accounts Receivable

- Prints an aging of accounts receivable.
- Accepts cash for multiple invoices or on-account.
- Interfaces with sales orders processing for credit checks.
- Prepares customer statements.
- Inquiry for payment history.

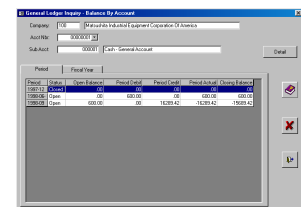
- Inquiry for check distribution.



- Supports multiple cash accounts.

General Ledger

- Fiscal periods user defined.
- User defined chart of account format.
- Manual journal entries accepted.
- Audit trails by date, by type and by account.
- Supports both detailed and summary trial balances.
- On-line Inquires show both summary and detailed transactions.



Financial Reporting

- Calculates financial statements.
- Build financial statements through Excel-like spread sheet program (Excel not required).
- Format statements with user defined fonts and colors.

- **Export statements** to Excel.