

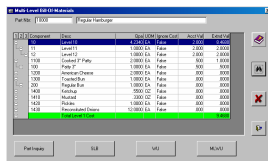
Feature Checklist

Production Planning



Encompasses planning and forecasting orders, creating and maintaining bills of materials and routings, processing work orders, monitoring projected and actual shop load and recording the physical movement of inventory.

Bills Of Material



- **Maintains Inventory Master File** provisions for several planning codes.
- **Maintains Product Structure File** provisions for lead time offset, scrap planning, and substitutes.
- **Multiple INQUIRIES** such as single level, multi-level, where used, multi-level where used.
- **Copy BILL** procedure speeds entry of similar bills of material.

Work Order Control

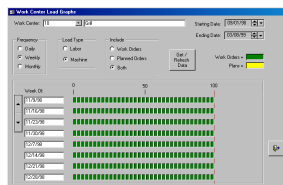
- **Optionally Manually Open Work Orders** and optionally tie them to a sales order.
- **Allow One Time Changes** to bills of material and routing
- **Paper Flow.** Print Routing and Pick Lists.
- **Reports and Inquires** such as manufacturing tickler, shortage listing and work order status.



Inventory Transactions

- **Issue To Work Orders** by exception (explode/deduct).
- **Unplanned Issues** supported.
- **On-Line Transaction History** complete with historical quantity on-hand.
- **Warehouse / Location / Lot** option for each part number.
- **Ability To Issue** inventory to a general ledger account.

Capacity Planning/Routing

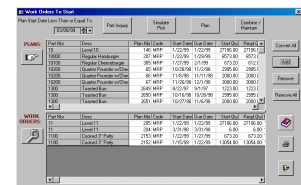


- **Work Centers** support by labor, fixed and variable burden rates. Provisions for move and queue times.
- **Standard Operations** are maintained with time study notations.
- **Copy Routing** procedure speeds entry of like routers.
- **Work Center** where used information.
- **Capacity Graphs** quickly show bottlenecks and under utilized work center capacity.
- **Optionally Plan Lead Time** based on routing steps.

Master Scheduling

- **Sales Forecasts** may be used. Sales Orders consume the forecast.
- **Master Schedules** supercede sales forecasts.
- **Planned Component Requirements** may be changed on a per plan basis.
- **Rough Cut** graphs load on work centers so a plan can meet feasibility.

Material Requirement Planning



- **Pegging and Multi-Level Pegging** supported for each part number.
- **Net Change or Regenerative** processing of MRP.
- **Shrinkage by Part and Scrap by BOM** calculations built in to MRP generation.
- **Optionally Converts Plans To Work Orders** while allowing manual changes to quantities and dates. Also combines two or more plans into one work order.
- **Creates Tickler** inquiries for purchased and manufactured parts.
- **Optionally Tie Plans** to sales orders (each sales order becomes a plan) for traditional job shops.